

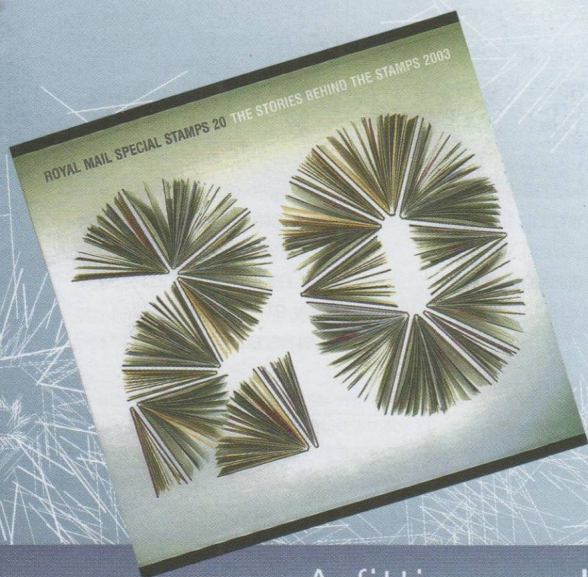
November 2003
No. 108

Stamp Preview

News for collectors from Royal Mail

Christmas Stamps

Available from 4th November



2003 Yearbook

A year in stamps
- unique 20th Edition

A fitting end to 2003

Christmas 20

As with last year's Christmas issue, the wonder of nature is captured in these startling images of ice and snow.

Christmas 2003

RO Christmas 2003 Presentation Pack

The fully illustrated pack features examples of Andy Goldsworthy's fascinating natural sculptures together with his own commentary.

The stamps were designed by Dick Davis. The ice and snow sculptures were created by artist Andy Goldsworthy, who works in the open air using materials found in the natural landscape. An important aspect of his work is the changing nature of his creations which he captures through photography.



2nd Class - Ice Spiral

This snake-like icicle was made

from reconstructed icicles wrapped round a tree at the Glen Marlin Falls in Goldsworthy's home county of Dumfriesshire.



1st Class - Icicle Star

The multipointed star was created

by dipping the thick ends of icicles in snow then water and holding them until they froze together.



E Class - Wall of Frozen Snow

The glowing globes were

created by carving the snow to varying thickness to allow the sun to shine through. This project was carried out in Izumi-Mura in Japan.



53p - Ice Ball

Scaur Water in Dumfriesshire was the location

for this sculpture. Ice was taken from frozen pools, broken into pieces and then welded together with water from dripping ice.



68p - Ice Hole

This was created in Capenhoch,

Dumfriesshire by filling the arch of a branch with snow and making a hole which changed with the light.



£1.12 - Snow Pyramids

Standing eerily inside the Arctic

Circle are the four pyramids or spires, which were moulded from snow at Grise Fjord, Ellesmere Island.

Technical Details - Christmas 2003

Issue Date	4th November 2003	Gum	Self-adhesive
Format	Horizontal	Perforations	Die-cut Simulated
Stamp Size	32mm x 30mm	Phosphor	As appropriate
Process	Gravure	Pack Number	353
Number per sheet	50	Alternative Handstamp	Bethlehem, Llandeilo
Printer	De La Rue Security Print		

03 Yearbook



Now in its 20th edition the Royal Mail Yearbook is a classic - beautifully illustrated with exceptional photography and fascinating narrative **PLUS** a complete set of 2003 mint stamps. The 2003 edition brings the stories behind this year's special stamps to life. **NEW!** Each copy is individually numbered, making a truly unique memento of 2003.

Also available: Luxury leather-bound edition in presentation box. Each may be personalised with a name.

For information on the luxury edition, please call 0131 316 7159.

ONLINE AUCTION - 11 DAYS ONLY!

Because demand will be high, we will offer selected numbered copies of the luxury leather-bound book online from 20th-30th October inclusive. These will be numbers: 1 -20, 50, 100, 200, 2000, 2003

For information visit: www.royalmail.com/yearbookauction

2003 Yearpack

A superb way to start a collection or simply a lovely way to remember the year.

2003's Special Stamps are presented in a handy wallet.



2003 issues featured

- Birds Of Prey - 14th January
- Occasions - 4th February
- The Secret Of Life - 25th February
- Fun Fruit & Veg - 25th March
- Extreme Endeavours - 29th April
- The Coronation - 2nd June
- HRH Prince William - 17th June
- Scotland - 15th July
- Pub Signs - 12th August
- Transports of Delight - 18th September
- The British Museum - 7th October
- Christmas - 4th November

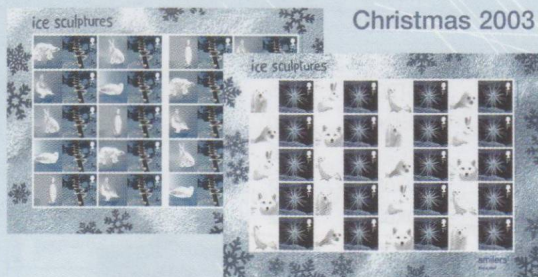


2003 Framed Stamps

The complete Royal Mail special stamp programme for 2003 to display in your home. The frame is solid wood with a graphite finish. Dimensions 863 x 575mm.

PY823 - £69.95 +p&p

Christmas 2003



Christmas 2003 Smilers Generic Sheets - Ice Sculptures

RO The 20 x 2nd Class stamps are paired with animal ice sculptures - penguin, polar bear, arctic hare, seal and ptarmigan. The 20 x 1st Class stamps are paired with photographic images of a polar bear, harp seal, snowshoe hare, polar fox and snowy owl. All stamps are self-adhesive.

Christmas 2003 Retail Books

RO The stamps are printed on a self adhesive laminate in a sheetlet format, which is then Z folded. For the 12 x 1st book, the sheetlet is folded into 3 panels of equal size while for the 24 x 2nd book, the sheetlet is folded into 5 panels of equal size.



Christmas 2003 FDC

RO To order your First Day Covers please use the form below and transfer costs to the order form overleaf.

**Also available
Christmas Air Letters**

Orders for the Christmas 2003 FDC must reach us by 4th November 2003

First Day Covers	Code	Price	Tallents Hse Postmark	Bethlehem Postmark	Total Cost
4th November - Christmas First Day Cover (Inland)	AF248	£4.17			
4th November - Christmas First Day Cover (Overseas)	AF248	£3.55			

For additional covers please write the names, address details and postmarks on a separate sheet of paper.

Total cost of FDCs to be carried overleaf £

I would like to send a personalised First Day Cover to the address below

Name

Address

Postcode